

Webinar

Connecting biodiversity, water, food, health and climate change in ecosystem assessments: **from the IPBES Nexus Assessment to national ecosystem assessments**

Image Credit: IPBES

Webinar Agenda



Session	Speaker
Welcome & Introduction	Pratik Tandon
Housekeeping and Ice Breaker	Mel Hanley
Overview: IPBES and national ecosystem assessments	Claire Brown
Overview of response options from the Nexus Assessment	Tiff van Huysen
Triologue methodology in support of the IPBES uptake and its role in informing national actions	Alexandra Postrigan
Nexus response through national ecosystem assessments:	Lilian Chimphepo
Question & Answer Session	Pratik Tandon
Closing Remarks	Juanita Chaves

HOUSEKEEPING



Recording: This webinar will be recorded and will be uploaded to our NEA Initiative website and UNEP-WCMC YouTube. If you have any issues with this, please let us know.



Microphone and Camera: Your microphone will be muted throughout the webinar.



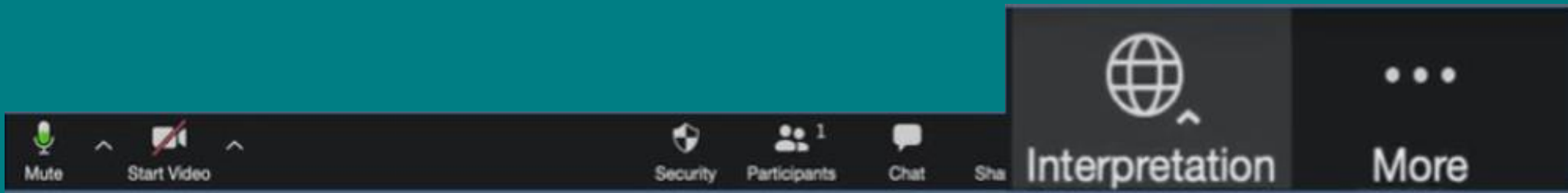
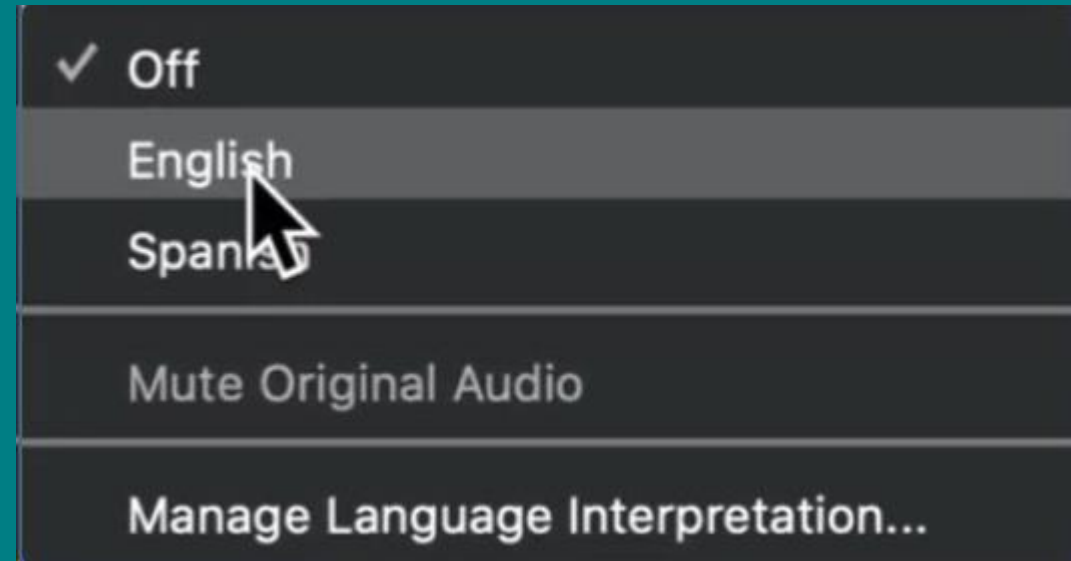
Questions: If you would like to comment or ask a question during the Q&A session, please type use the Q&A feature accessible from the bottom of your screen.



Support: If you have any technical issues, please send a direct message to **Mel Hanley** – UNEP-WCMC Events via the chat.

INTERPRETATION

This session has live interpretation in French and Spanish.




ICE BREAKER

Join at menti.com | use code **2111 7456** Mentimeter

Instructions

Go to
www.menti.com
Enter the code
2111 7456



Or use QR code

Heart icon

Overview: IPBES and national ecosystem assessments

Claire Brown
Principal Technical Specialist
UNEP-WCMC

Overview of response options from the Nexus Assessment

Tiff van Huysen
Head of the Technical Support Unit
for the Nexus Assessment, IPBES



Nexus Assessment Response Options

www.ipbes.net

The Intergovernmental Science-Policy Platform
on Biodiversity & Ecosystem Services

#NexusAssessment



Food and Agriculture
Organization of the
United Nations



Why do we need nexus response options & what are they?

- The **global crises** of biodiversity loss, water and food insecurity, health risks and climate change are **interconnected** – **our responses to address them are not**
- These crises interact and exacerbate each other in ways that make **separate efforts** to address them **ineffective** and **counterproductive**
- **Nexus response options** are **actions or policies** that support **effective, sustainable, synergistic governance and management** of the **nexus elements and their interlinkages**

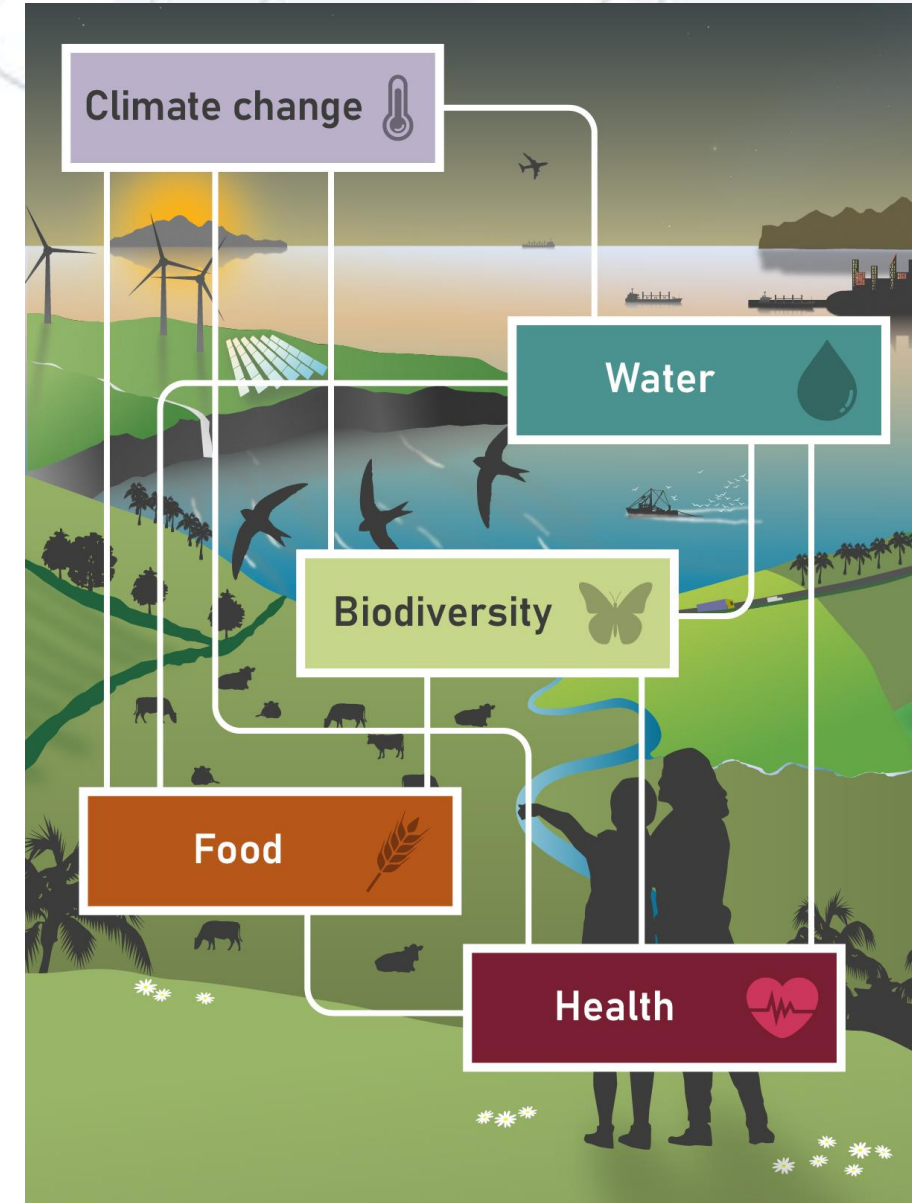


Figure SPM.1

Why do we need nexus response options & what are they?

- The options assessed represent a **range of solutions** available to **actors in multiple sectors**, including Indigenous Peoples and local communities
- The options can be applied at different **spatial** and **temporal scales** and in different **ecological, social, political, and economic contexts**
- Over **70 response options** are assessed in the chapter 5 sector-based subchapters of the report

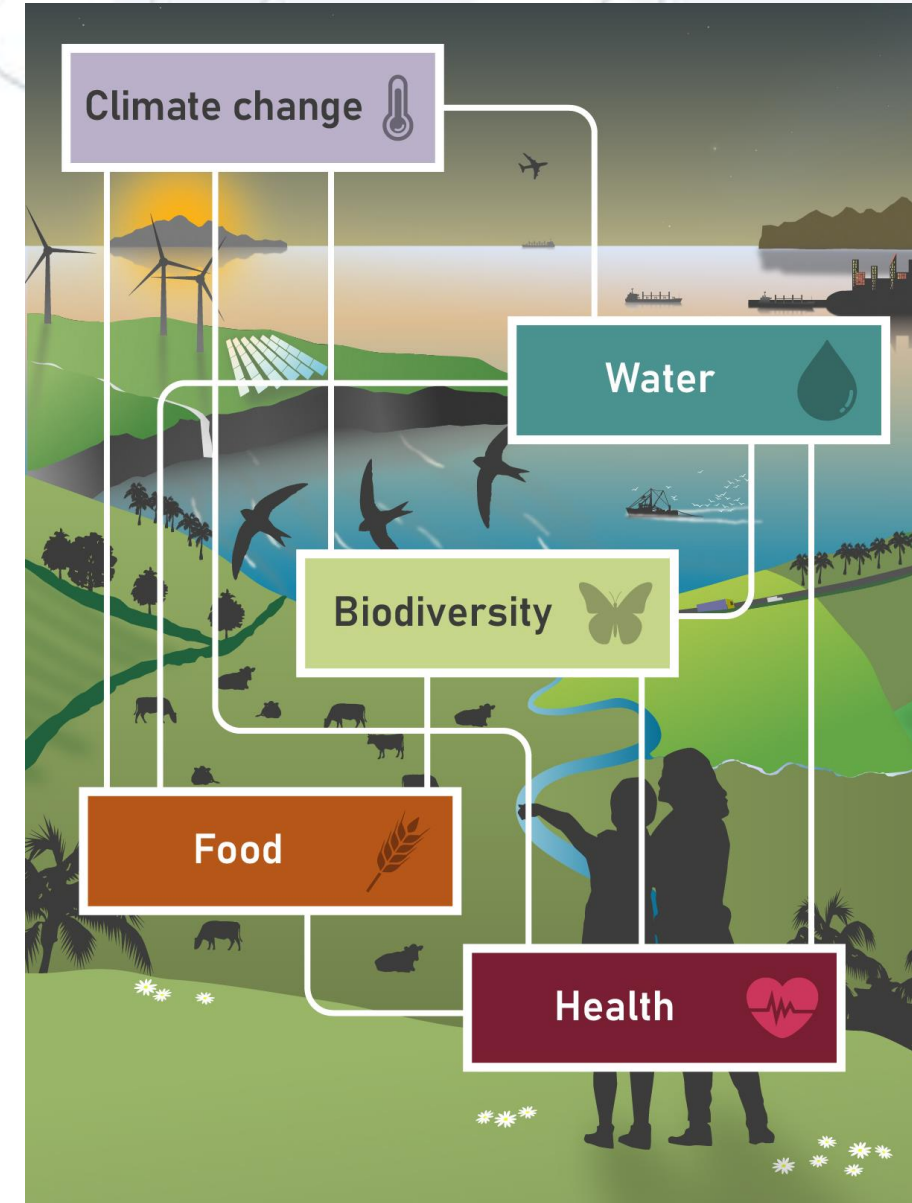


Figure SPM.1

Nexus response options

Nexus elements



Figure SPM.10

Response options are available worldwide

Nexus elements

Biodiversity



Water



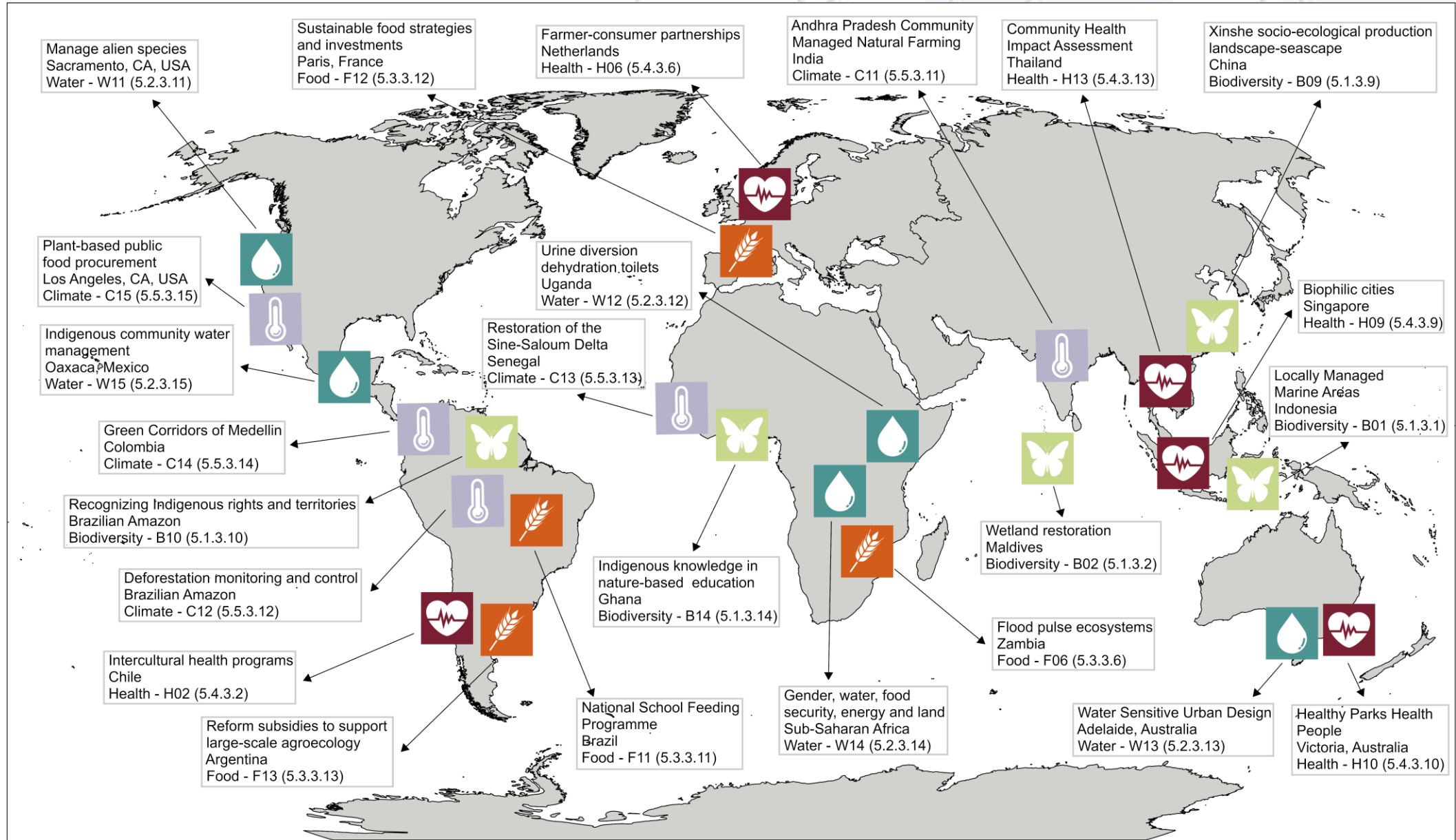
Food



Health



Climate change



Chapter 5.6., Figure 5.6.8

Many response options benefit multiple nexus elements

Nexus elements

Biodiversity



Water



Food



Health



Climate change



Response option						
Conserve ecosystems	B01	Area-based conservation	●	●	●	●
	F01	Halt conversion of ecosystems of high ecological integrity	●	●	●	●
	H10	Forest conservation for health	●	●	●	●
Restore ecosystems	B05	Forest landscape restoration	●	●	●	●
	B06	Restoration of coastal and marine systems	●	●	IC/NE	●
	B07	Restoration of inland water systems	●	●	●	●
	B08	Rewilding	●	●	●	●
	F02	Restore soil health	●	●	●	●
	H08	Mangrove conservation and restoration for health	●	●	●	●
	C04	Wetland conservation and restoration	●	●	—	●
Manage ecosystems	C13	Restoration of coastal and marine ecosystems for carbon sequestration	●	●	●	●
	B03	Agroecology*	●	●	●	●
	C11		●	●	●	●
	W05	Sustainable inland fisheries	●	●	●	●
	W11	Manage alien species	●	●	●	●
	F04	Ecological intensification – croplands	●	●	●	●
	F05	Ecological intensification – rangelands	●	●	●	●
	F06	Ecological intensification – aquatic foods	●	●	●	●
Integrate planning and governance	C01	Increase soil organic carbon	●	●	●	●
	B09	Integrated landscape and seascape approaches	●	●	●	●
	B12	Land and sea planning	●	●	●	●
	W02	Integrated water infrastructure	●	●	●	●
	W08	Transboundary water cooperation	●	●	NE	●
	W09	Groundwater governance	●	●	●	●
	W13	Water-sensitive urban infrastructure	—	●	●	●
	W15	Community water management	●	●	●	●
	F12	City region food systems	—	●	●	●
	H12	Integrated watershed-health interventions	●	●	●	●
Manage risk	B02	Urban nature-based solutions*	●	●	●	●
	C14		●	●	●	●
	B04	Ecosystem-based adaptation in rural landscapes	●	●	●	●
	W03	Dam operation	—	●	●	●
	H03	Net-zero sustainable healthcare	●	●	●	●
	H09	Urban green infrastructure	●	●	●	●
	H11	Biodiversity management for zoonoses	●	●	●	●
	H13	Health impact assessments	●	●	●	●
	H14	The One Health approach	●	●	●	●
	C09	Multi-hazard early warning systems	●	●	●	●



Blue dots = positive impacts



Red dots = negative impacts

Figure SPM.8 (partial figure)

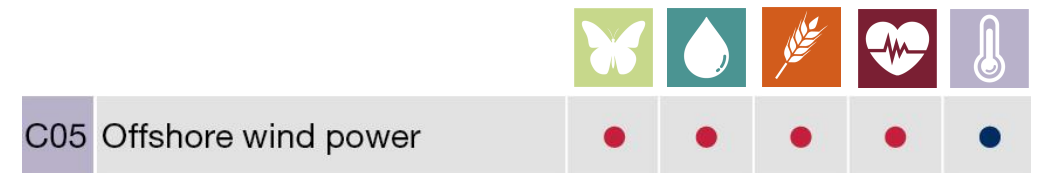
But impacts vary and trade-offs will need to be managed



Photo by [Atex Ray/UNDP](#) on [Flickr](#), CC BY-NC 2.0



Photo by [Nicholas Doherty](#) on [Unsplash](#)



**Nexus
elements**

Biodiversity



Water



Food



Health



**Climate
change**



**Blue dots =
positive impacts**



**Red dots =
negative impacts**

Response options also support global policy frameworks

- In addition to nexus elements benefits, response options can support the achievement of global goals and targets such as the:
 - **Sustainable Development Goals**
 - **Kunming-Montreal Biodiversity Framework targets**
 - **Paris Agreement long-term goals for mitigation and adaptation**
- Relevant for national-level commitments, decision-making, and planning (e.g., NBSAPs)

#NexusAssessment

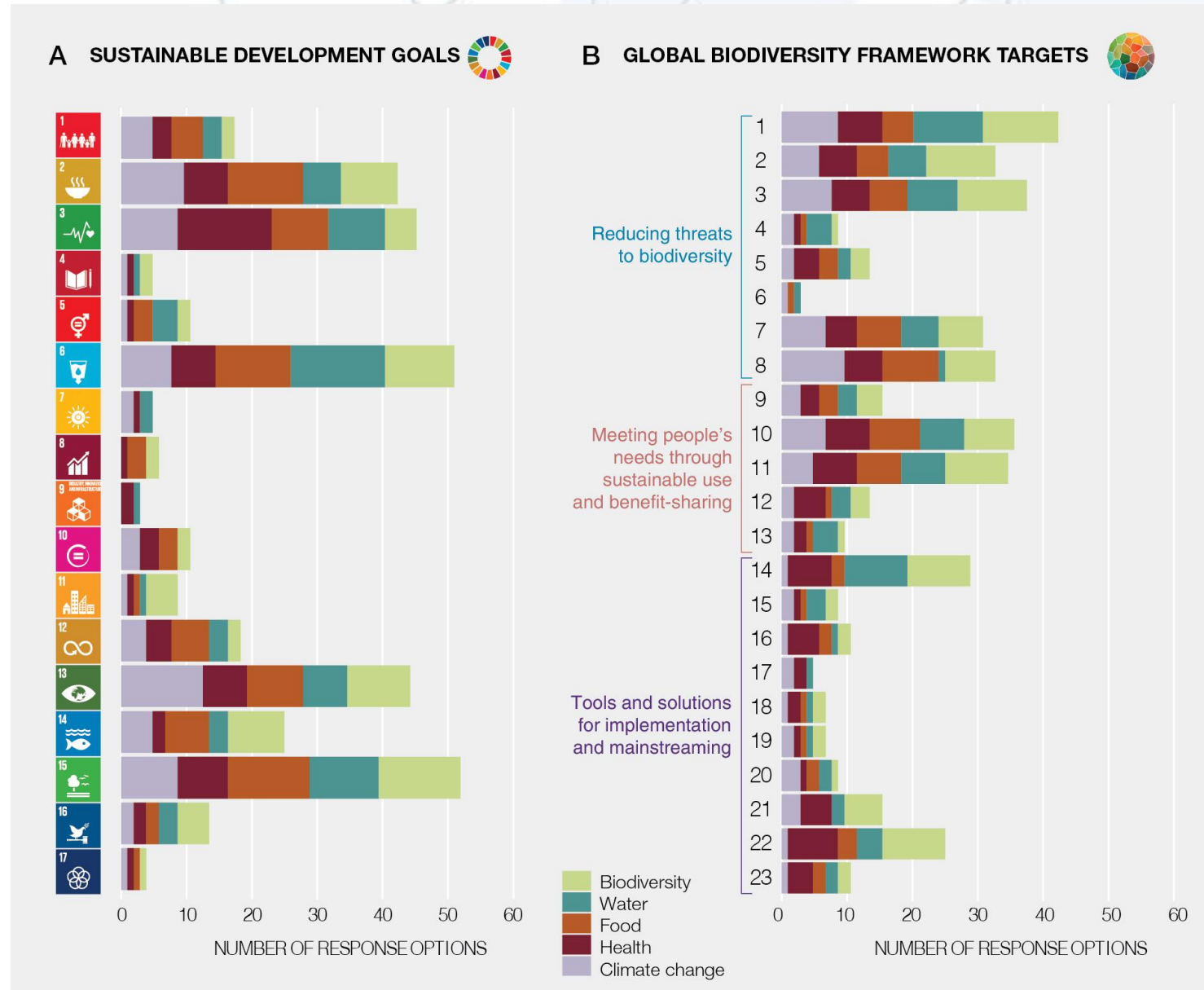


Figure SPM.10

Relevancy for National Ecosystem Assessments

NEA process – expert evaluation of response options

- Examining past and current actions taken to secure/enhance the contribution of biodiversity to human well-being

Nexus response options can inform the NEA evaluation process by:

- Providing **evidence** for nexus response options implemented by countries
 - Benefits for nexus elements
 - Magnitude of impacts
 - Synergies and trade-offs
- Helping to identify **opportunities for scaling response options** out (i.e., to new places) or down (i.e., locally)
- Reinforcing the importance of **full and effective participation** of a wide range of **actors** in the co-design, coordination, and implementation of response options to increase the **magnitude of benefits** and **ensure equitable outcomes**



IPBES website Nexus Assessment page

<https://www.ipbes.net/nexus-assessment>



#NexusAssessment



Triologue methodology in support of the IPBES uptake and its role in informing national actions

Alexandra Postrigan
Partnership Development
and Facilitation Specialist
UNDP

Triologue methodology in support of the IPBES uptake and its role in informing national actions

- Alexandra Postrigan, Partnership Development and Facilitation Specialist, UNDP



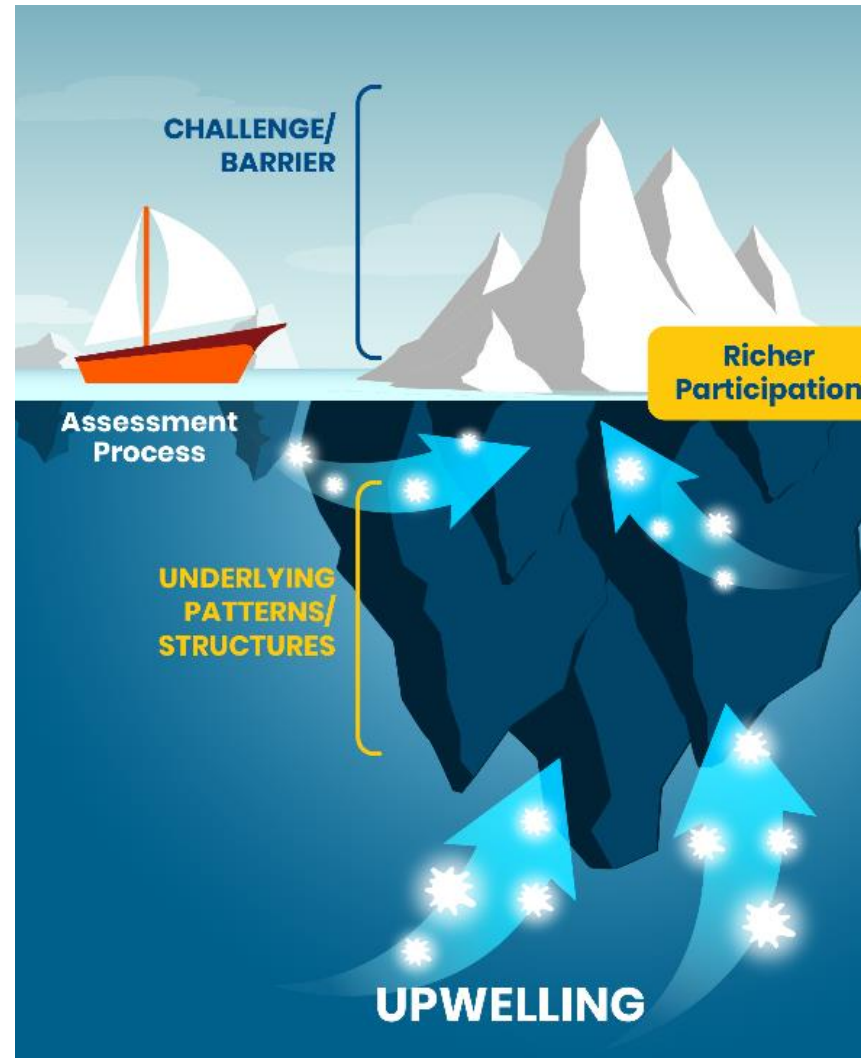
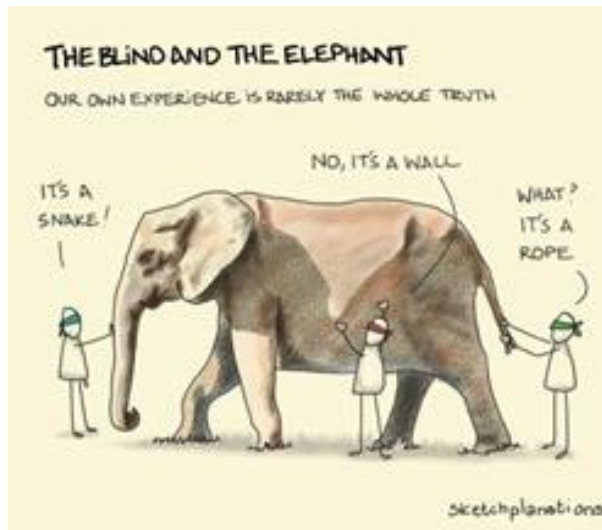
SUPPORTED BY



Federal Ministry
for the Environment, Nature Conservation
and Nuclear Safety

SwedBio
a programme of Nordiska Akademierna

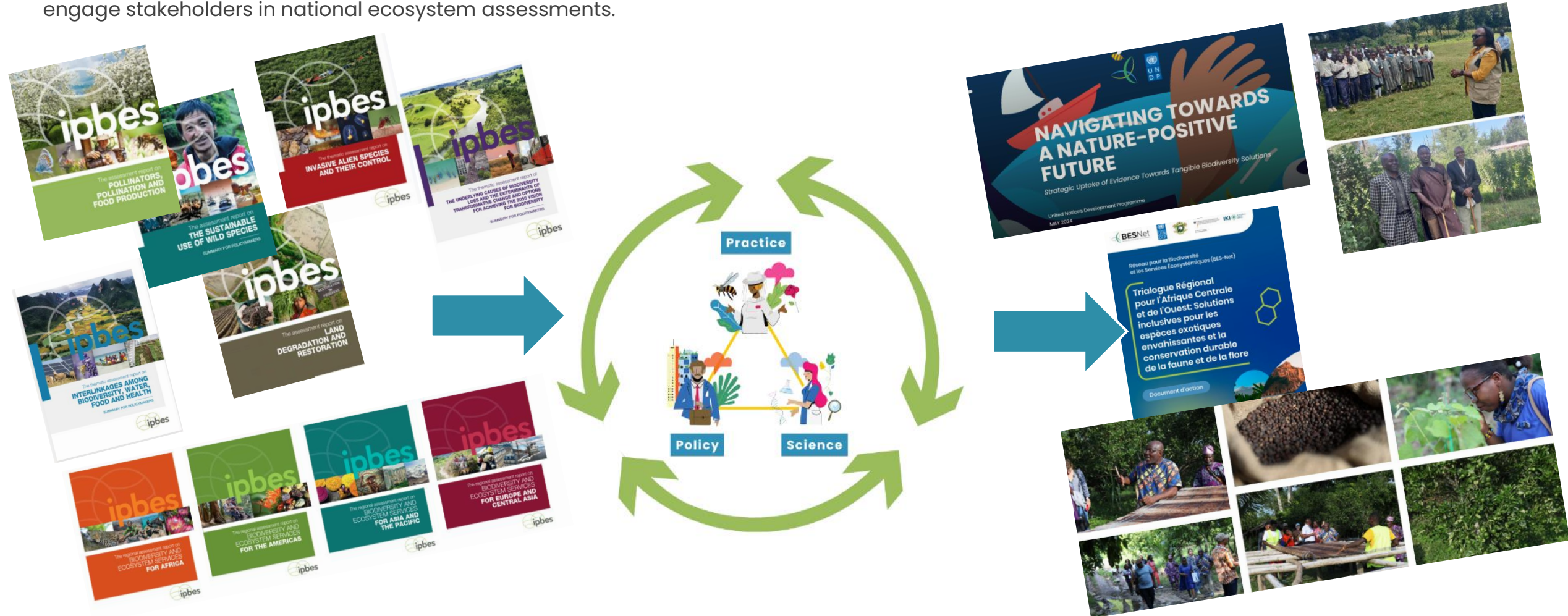
Why a Trialogue?



What is a Trialogue?

A Trialogue is a multi-stakeholder dialogue methodology designed to foster inclusive exchanges among policymakers, scientists, and practitioners. It ensures that scientific findings from IPBES assessments, Indigenous and local knowledge, and practical expertise are interwoven into decision-making processes. Through this approach, participants collaboratively develop action-oriented solutions tailored to their national and regional contexts.

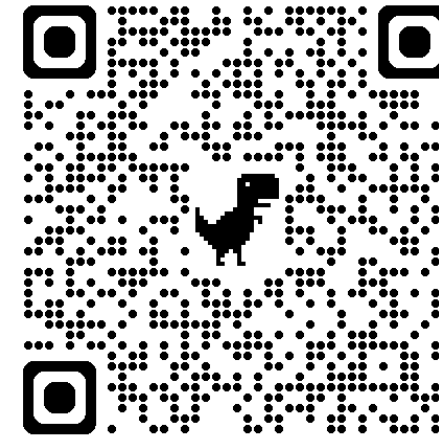
While BES-Net Trialogues support regional discussions to facilitate the uptake of IPBES assessments, they are also applied at the national level to engage stakeholders in national ecosystem assessments.



The East and Southern Africa Trialogue and the Nexus Approach



- Focused on the interconnected challenges of Invasive Alien Species (IAS) and the sustainable use of wildlife.
- The IPBES Nexus Assessment, which presents 70+ response options, was well received as a stimulus for integrating thematic issues into cohesive policy, science, and practice solutions.
- Actions co-created during the Trialogue align with and, in most cases, directly contribute to the Kunming-Montreal Global Biodiversity Framework (GBF) by advancing knowledge-based actions that sustain both biodiversity and human well-being.
- Stay tuned for more from the Trialogue!





Thank you



SUPPORTED BY



Federal Ministry
for the Environment, Nature Conservation
and Nuclear Safety

SwedBio
Swedish Biodiversity Centre

Nexus response through national ecosystem assessments: Malawi

Lilian Chimphepo
Co-chair of the Malawi National
Ecosystem Assessment

NEXUS RESPONSE THROUGH NATIONAL ECOSYSTEM ASSESSMENTS AND EXPERIENCE ON THE REGIONAL TRIALOGUE



By Lilian Chimphepo PhD
IPBES FOCAL POINT FOR MALAWI



Introduction

- Malawi launched the NEA in 2020
- Assessment focuses on three thematic areas
 - Terrestrial Ecosystem
 - Aquatic Ecosystem
 - Wetland Ecosystem





Chapters NEA

- Chapter one - Introduction
- Chapter two - Methodology
- Chapter three- Aquatic ecosystem
- Chapter four – Terrestrial ecosystem
- Chapter five – Wetland Ecosystem
- Chapter Six - Nexus of the three ecosystems
- Chapter Seven - Recommendations and Conclusions

**Biodiversity and
ecosystems
services**

**Land
degradation
and restoration**

HOW IS NEA ADDRESSING BIODIVERSITY LINKAGES AMONG THE THREE ECOSYSTEMS?

- The Malawi NEA has a stand alone chapter on nexus



➤ Aquatic Ecosystem

INDIGENOUS
AND LOCAL
KNOWLEDGE



Wetland Ecosystem



Terrestrial Ecosystem



The NEA nexus chapter

- To understand the linkages and interdependencies among the three ecosystem types evaluated in the NEA.
- Develop integrated and adaptive decisions to maximize synergies and minimize tradeoffs.
- Enhance holistic management and governance.
- How nexus elements (water, food, biodiversity and health) in the three ecosystems are dependent of the status and condition of the ecosystem.

How the Nexus Assessment can support NEA

- Nexus approach- NEA will adapt the methodology from the Nexus Assessment.
- Response options
 - Provide a handy list of options which the NEA can adopt.
 - Inform NEA on how to identify opportunities for collaboration.
 - Select options that provide positive impact on biodiversity.
 - Avoid unplanned tradeoff.
 - Inform holistic management and governance of different ecosystems.



Regional Trialogue experience sharing

- Focused on two thematic assessments
 - Thematic assessment on IAS
 - Thematic Assessment on Sustainable use of wildlife
 - ❖ Explored common challenges in the region and opportunities for collaboration
 - ❖ Shared experience on innovation for controlling IAS (innovation corner)
 - ❖ Made use of the response options from the nexus to create actionable solutions to address IAS and wildlife issues
 - ❖ Field visits- Botanical Garden and National Park

Regional Trialogue experience sharing Cont...

Malawi Four ambitions

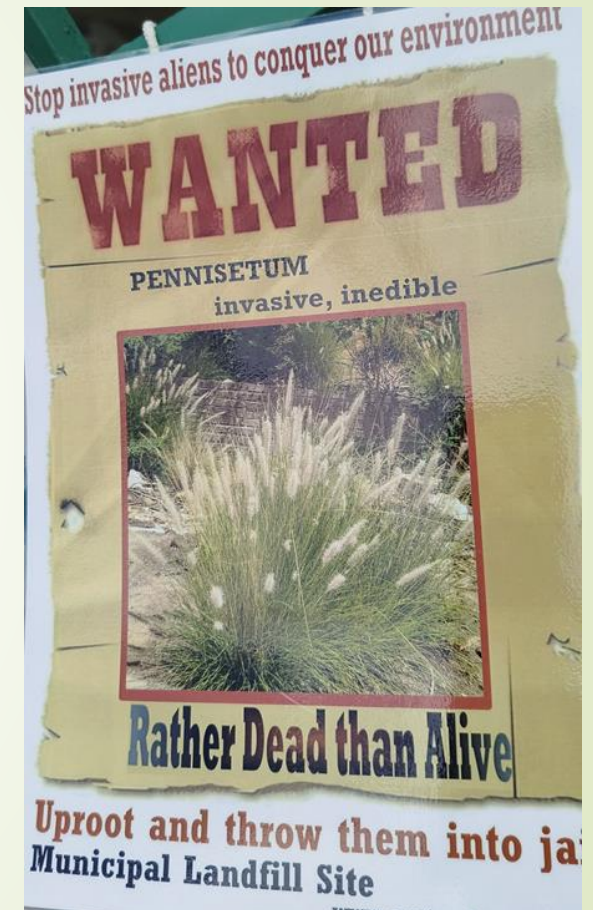
1. Restoration of degraded ecosystems
2. Enhance management and control of IAS
3. Improve awareness, knowledge sharing & dissemination
4. Improve food security

Action plan- response actions from Nexus assessment

- 1 Restoration of degraded ecosystems

Response action: Halt convention of ecosystem of high ecological integrity

- stronger positive impact on Biodiversity, water and climate change
- weaker positive impact on food and health.





➤ **THANK YOU FOR YOUR ATTENTION**

Question & Answer Session



Image Credit: akuditaputri/Shutterstock.com

Image Credit: Joseycha Ramos/Shutterstock.com

Closing Remarks

Juanita Chaves
Senior Programme Officer
UNEP-WCMC



Image Credit: Jay Ondreicka/Shutterstock.com



**The NEA Initiative Newsletter –
have your say!**

**Scan the QR Code to
take the survey!**



Want to get the latest news from the NEA Initiative?

We're working on plans for a dedicated newsletter which will gather updates and resources from across the project, and want to hear your views.

Fill out our short survey to let us know what you would like to see included.



The Sub-Global Assessment Network

**Scan the QR Code to
join the network and
stay up to date with
latest news and
upcoming events!**



A community of practice
that connects and
supports individuals and
organisations involved in
sub-global ecosystem
assessments.



Image Credit: Sergey Uryadnikov/Shutterstock.com



Image Credit: Sids/Shutterstock.com



UN environment programme | WCMC | NEA NATIONAL ECOSYSTEM ASSESSMENT INITIATIVE

Image Credit: fuyu liu/Shutterstock.com



BESNet Biodiversity and Ecosystem Services Network

Image Credit: Dragon Images/Shutterstock.com



SGA NETWORK

Image Credit: Mumemories/Shutterstock.com

Thank You!