

UNEP-WCMC UPDATES: SUPPORT & IMPACT

Noor Noor & Grania Cooke

UNEP-WCMC

NEA

NATIONAL
ECOSYSTEM
ASSESSMENT
INITIATIVE



Supported by:



based on a decision of
the German Bundestag

PARTNERSHIP



Supported by:



based on a decision of
the German Bundestag

OUR TEAM



Claire Brown
Principal Technical Specialist



Juanita Chaves Posada
Senior Programme Officer



Charlotte Hicks
Senior Technical Officer



Abisha Mapendembe
Senior Programme Officer



Raymila Naicker
Project Administrative Officer



Santhuri Naidoo
Programme Officer



Noor A. Noor
Programme Officer



Grania Cooke
Associate Programme Officer



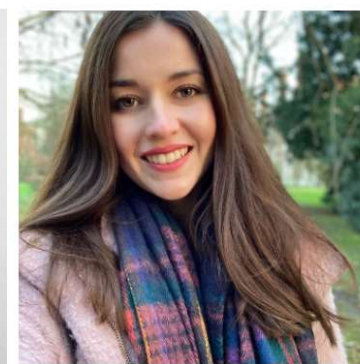
Ceire Booth
Associate Programme Officer



Carla Bengoa Rojas
Programme Officer - Policy



Boipelo Tshwene-Mauchaza
Programme Officer



Justine Lancelin
Associate Programme Officer

OUR WORK

Country one-to-one support

Expert training & Mentoring

Capacity-building materials and sessions

Policy integration

Experience & Knowledge sharing

Networking

Exposure to international fora

Feedback on outputs

Dedicated website

Communications

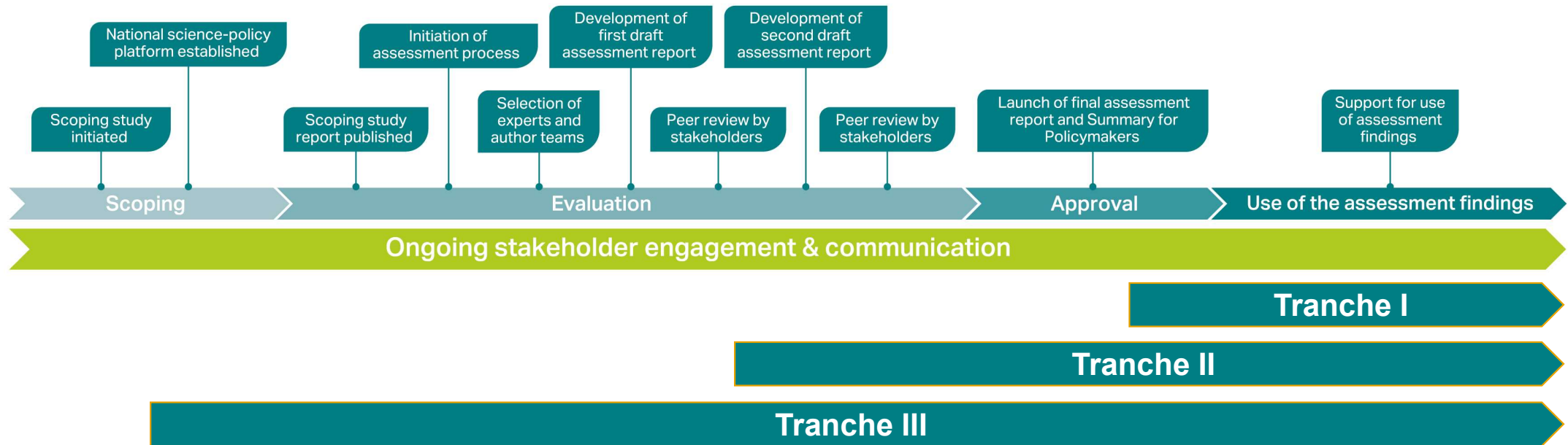
Supporting:
IPBES work programme Objective 2(c)
IPBES capacity-building rolling plan

TIMELINE

THE IPBES ASSESSMENT PROCESS



TIMELINE



TYPES OF SUPPORT & RESOURCES



1. Written materials (guidance documents, reports, toolkits)



2. Webinars



3. Direct support (1-to-1)



4. Knowledge-exchange + workshops

1. WRITTEN MATERIALS

- Guidance documents
- Toolkits
- Reports
- Case studies



Introductory guidance

- Roles and governance
- Communication strategy
- Selection of authors
- Scoping stage (background)
- Scoping report outline
- Data storage and management
- Literature referencing
- Coordinating peer review
- Why engage with ILK
- Audience interaction tools
- Confidence terms
- Scenarios: deciding on which scenarios
- Scenarios: getting started

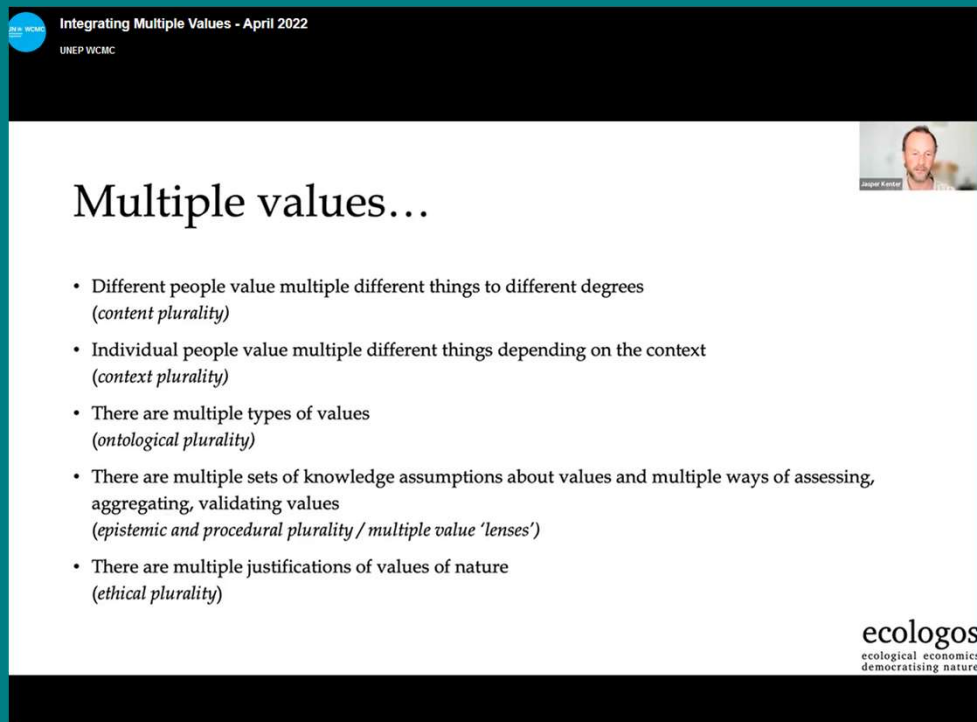
Detailed guidance

- National biodiversity platforms
- Practical guidance ILK
- Communications Toolkit
- National ecosystem assessment to support implementation of the Convention on Biological Diversity

Lessons Learned

- Stages of the Assessment
- Common elements

2. WEBINARS



Integrating Multiple Values - April 2022
UNEP WCMC

Multiple values...

- Different people value multiple different things to different degrees
(*content plurality*)
- Individual people value multiple different things depending on the context
(*context plurality*)
- There are multiple types of values
(*ontological plurality*)
- There are multiple sets of knowledge assumptions about values and multiple ways of assessing, aggregating, validating values
(*epistemic and procedural plurality / multiple value 'lenses'*)
- There are multiple justifications of values of nature
(*ethical plurality*)

ecologos
ecological economics
democratising nature

Webinar: Integrating multiple values into a national ecosystem assessment

Resource



Integrating Multiple Values - April 2022
UNEP WCMC

Integrating multiple values

Rev. Dr. Jasper Kenter
Principal Investigator in the UK NEA follow-on phase
Lead Author in the ongoing IPBES Values Assessment

NEA NATIONAL
ECOSYSTEM
ASSESSMENT
INITIATIVE

View Slides

3. DIRECT 1-TO-1 SUPPORT

- Tailored support & expertise
- Technical, thematic, administrative, etc.



4. KNOWLEDGE EXCHANGE

- Workshops & meetings
- Peer-to-peer learning

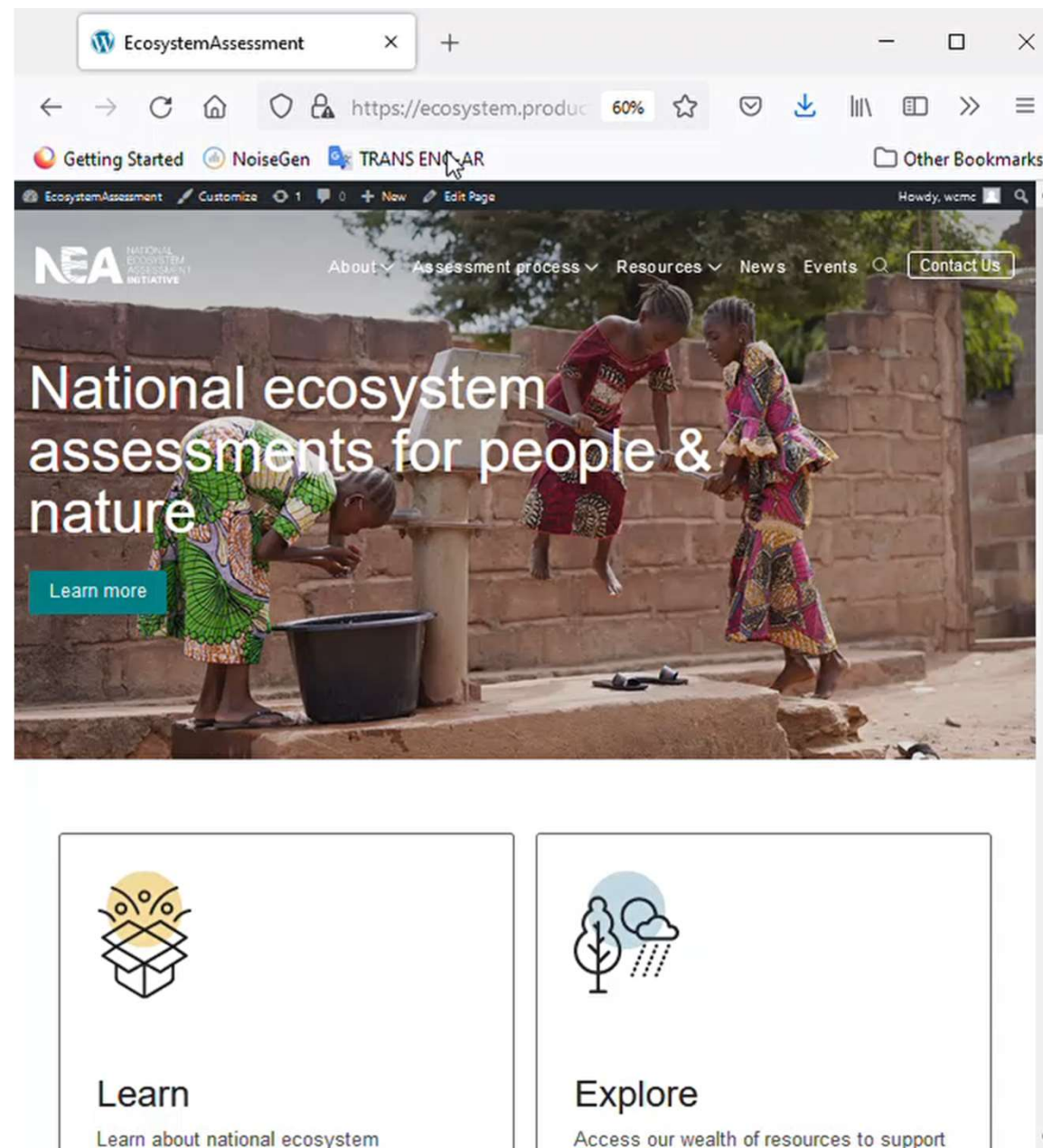




WEBSITE



www.ecosystemassessments.net/

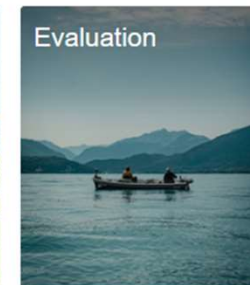


NEA INITIATIVE WEBSITE

www.ecosystemassessments.net/resources



Explore our resources



Types of resources

